



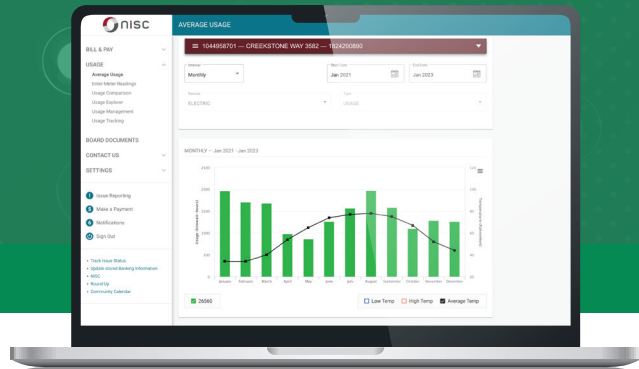
# UPGRADE UNLOCKED

**New Look. New Experience. Same SmartHub.**

Manage your account like never before with a new and improved SmartHub web application. The convenience of online communications at your fingertips.

With the new web design, your usage and payment details are front and center for fast, easy access. It's important to note that members who primarily use the mobile app will not see changes to that platform as it was already updated.

We encourage you to check it out! Updates will be rolled out in mid-February.



**People's Energy Cooperative**

Your Touchstone Energy® Cooperative 

(800) 214-2694 • [www.peoplesenergy.coop](http://www.peoplesenergy.coop)

*This institution is an equal opportunity provider and employer*

January 2024